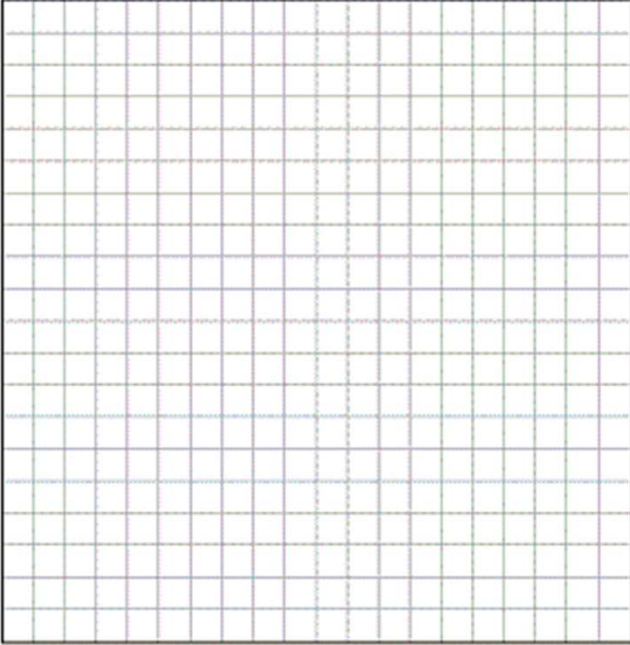


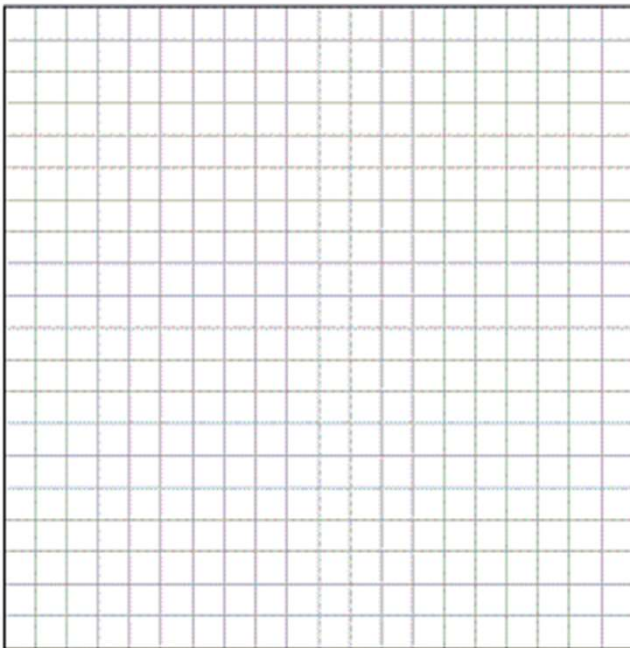
## Sketch Quadratic Graphs

1. Graph the following functions, and identify key features of the graph.

a)  $g(x) = -2(x - 2)(x + 7)$



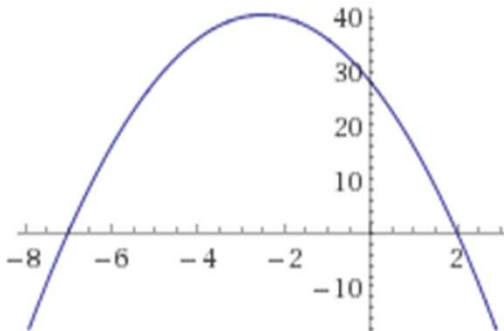
b)  $h(x) = x^2 - 16$



## Sketch Quadratic Graphs

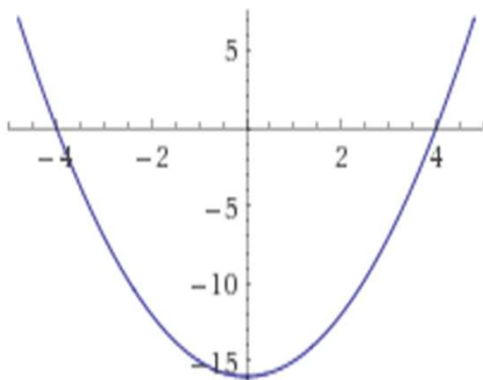
1. Graph the following functions, and identify key features of the graph.

a)  $g(x) = -2(x - 2)(x + 7)$



$x$ -intercepts  $(2, 0)$  and  $(-7, 0)$ ;  
vertex is where  $x = -2.5$   $(-2.5, 40.5)$ ;  
 $y$ -intercept is  $(0, 28)$ .

b)  $h(x) = x^2 - 16$



$x$ -intercepts  $(4, 0)$  and  $(-4, 0)$ ;  
 $y$ -intercept and vertex are both  $(0, -16)$ .