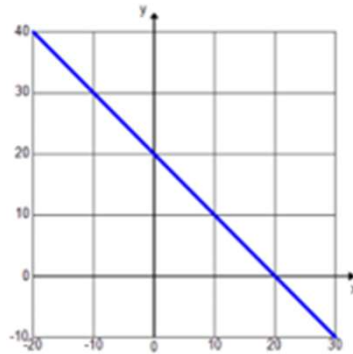
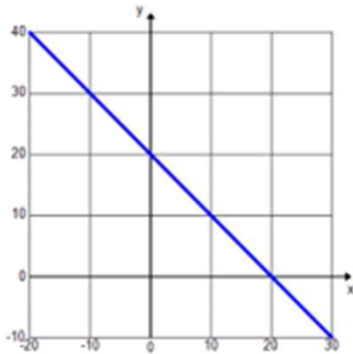


Graphs of Linear Equations & Inequalities

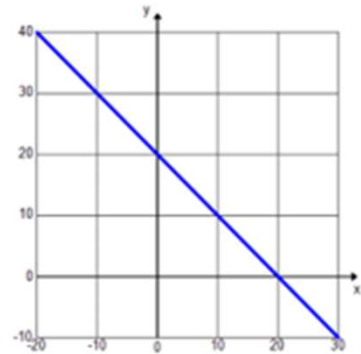
The solution to $x + y = 20$ is shown on the graph below.



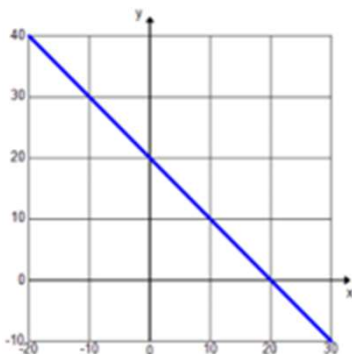
a) Graph the solution to $x + y \leq 20$.



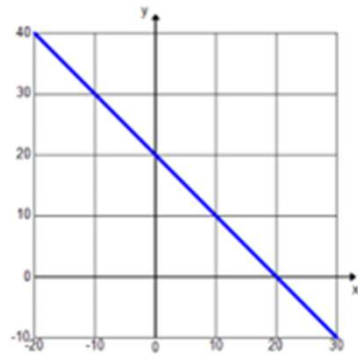
b) Graph the solution to $x + y < 20$.



c) Graph the solution to $x + y \geq 20$.

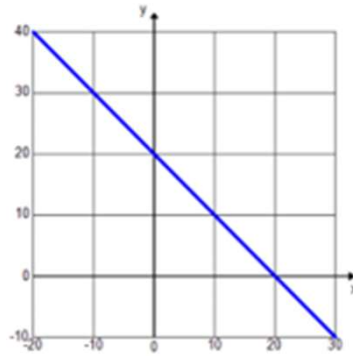


d) Graph the solution to $x + y > 20$.

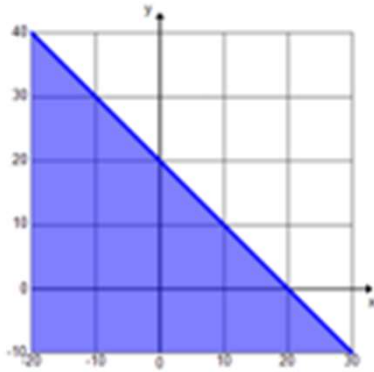


Graphs of Linear Equations & Inequalities

The solution to $x + y = 20$ is shown on the graph below.



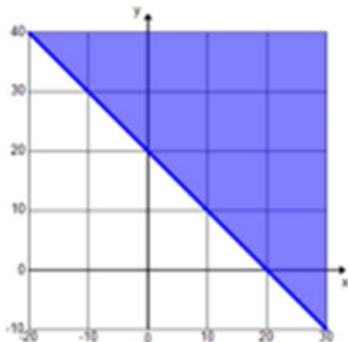
a) Graph the solution to $x + y \leq 20$.



b) Graph the solution to $x + y < 20$.



c) Graph the solution to $x + y \geq 20$.



d) Graph the solution to $x + y > 20$.



Go to onlinemathlearning.com for more free math resources