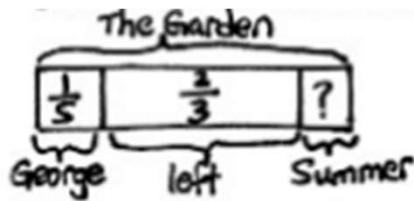




## Fraction Word Problems Worksheets

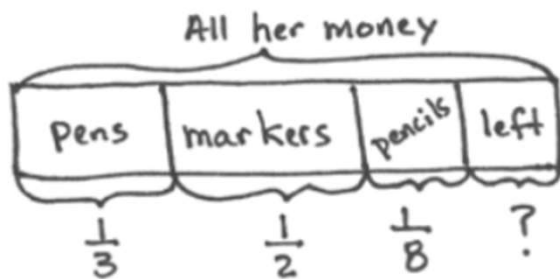
1. George weeded  $\frac{1}{5}$  of the garden, and Summer weeded some, too. When they were finished,  $\frac{2}{3}$  of the garden still needed to be weeded. What fraction of the garden did Summer weed?



$$\begin{aligned}1 - \frac{1}{5} - \frac{2}{3} \\&= \frac{4}{5} - \frac{2}{3} \\&= \frac{12}{15} - \frac{10}{15} \\&= \frac{2}{15}\end{aligned}$$

Summer weeded  $\frac{2}{15}$  of the garden.

2. Jing spent  $\frac{1}{3}$  of her money on a pack of pens,  $\frac{1}{2}$  of her money on a pack of markers, and  $\frac{1}{8}$  of her money on a pack of pencils. What fraction of her money is left?



$$\begin{aligned}1 - \frac{1}{3} - \frac{1}{2} - \frac{1}{8} \\&= \frac{2}{3} - \frac{1}{2} - \frac{1}{8} \\&= \frac{2}{3} - \frac{5}{8} \\&= \frac{16}{24} - \frac{15}{24} \\&= \frac{1}{24}\end{aligned}$$

Jing had  $\frac{1}{24}$  of her money left.